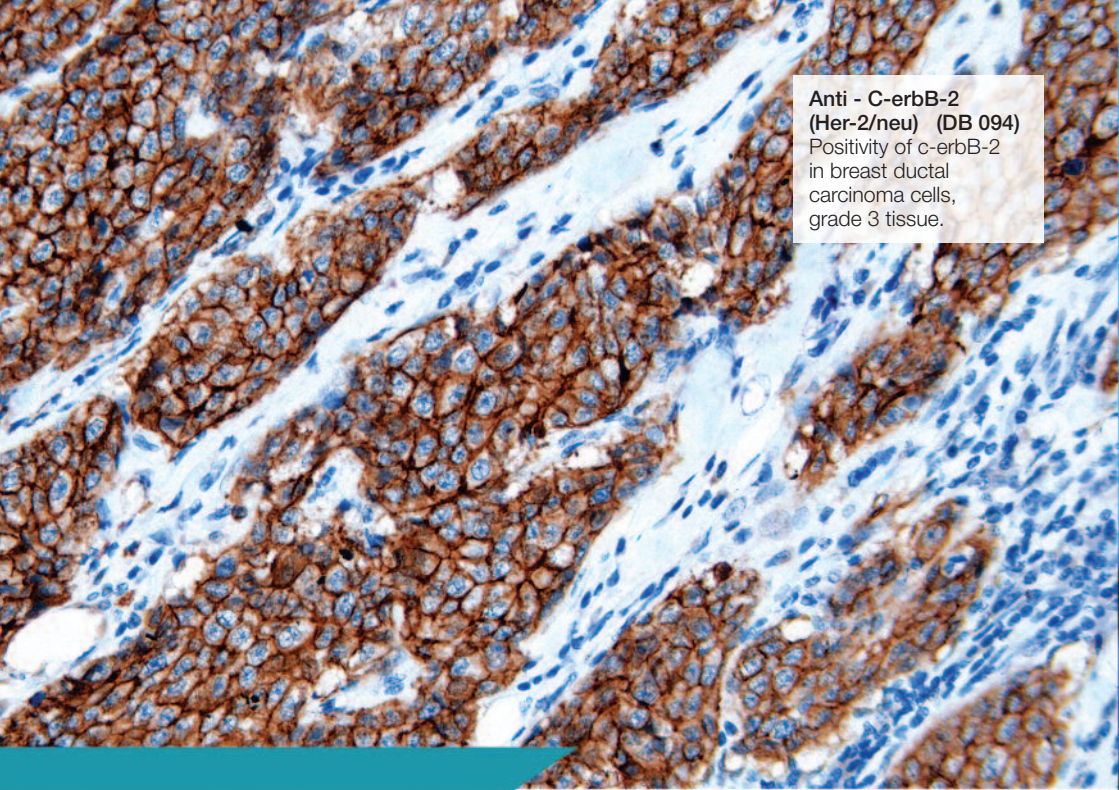


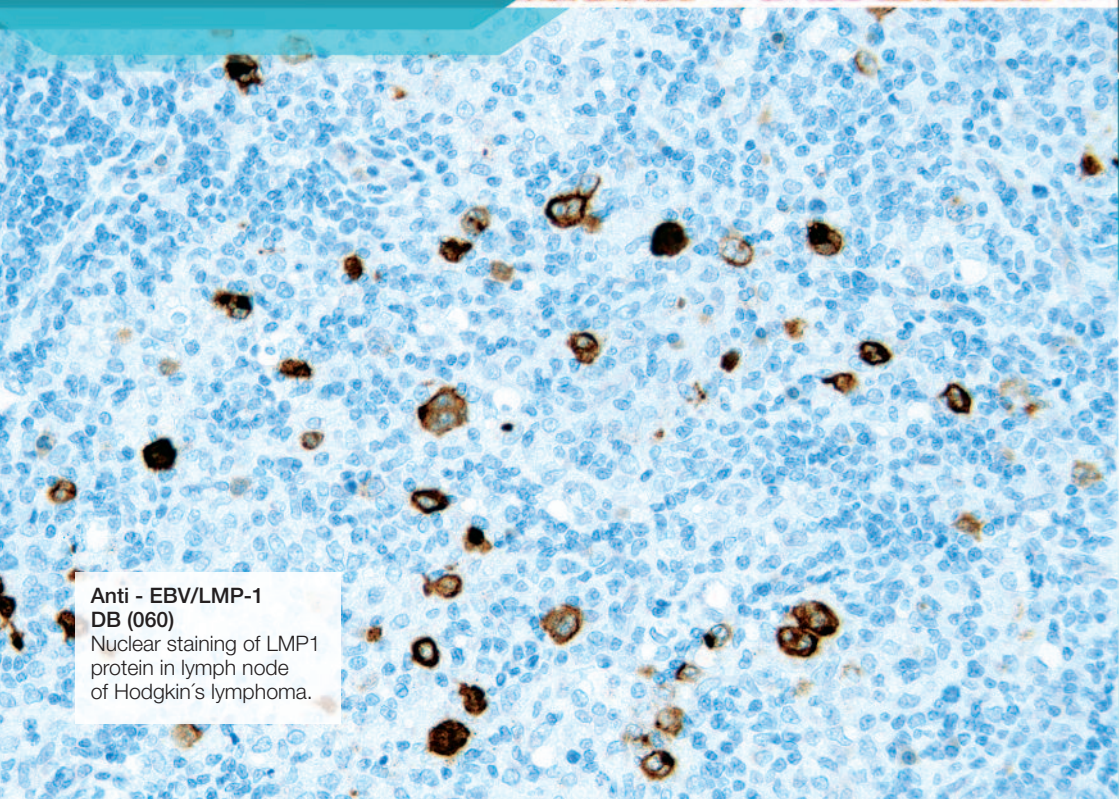


Rabbit clonal monospecific antibodies  
for clinical diagnostics and research

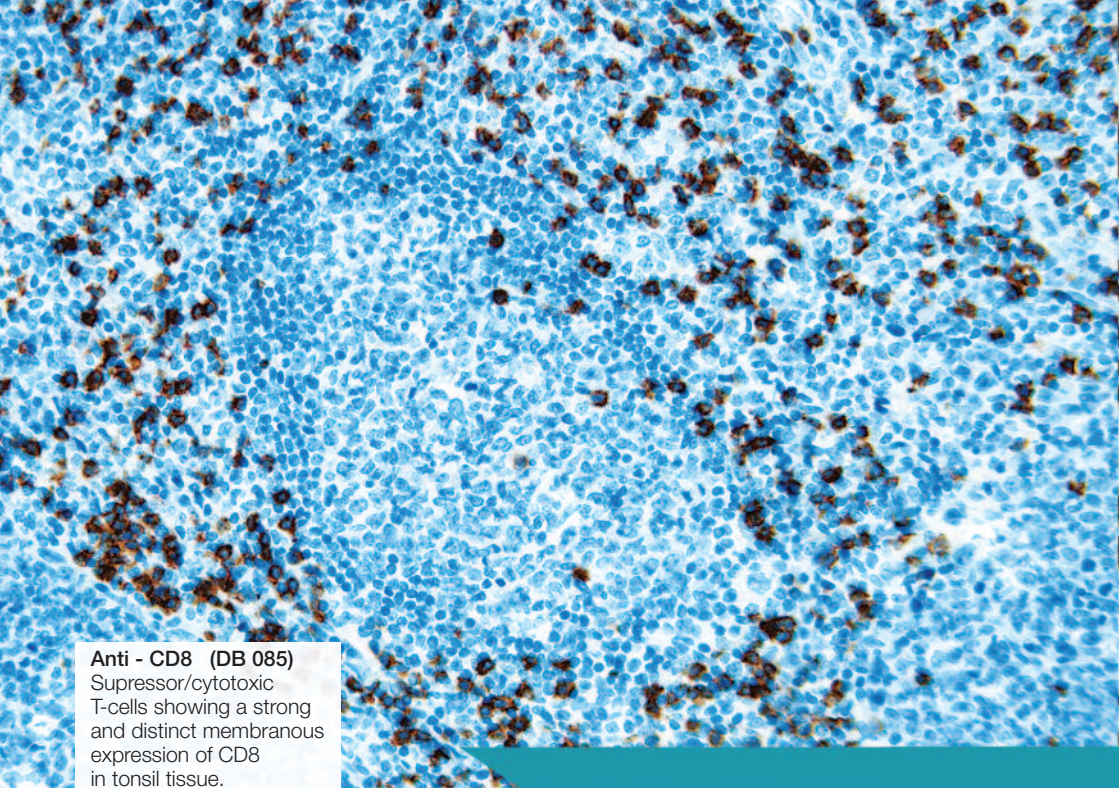
• • • More Than Antibodies  
**DB BIOTECH**  
[www.dbbiotech.com](http://www.dbbiotech.com) • •



**Anti - C-erbB-2  
(Her-2/neu) (DB 094)**  
Positivity of c-erbB-2  
in breast ductal  
carcinoma cells,  
grade 3 tissue.

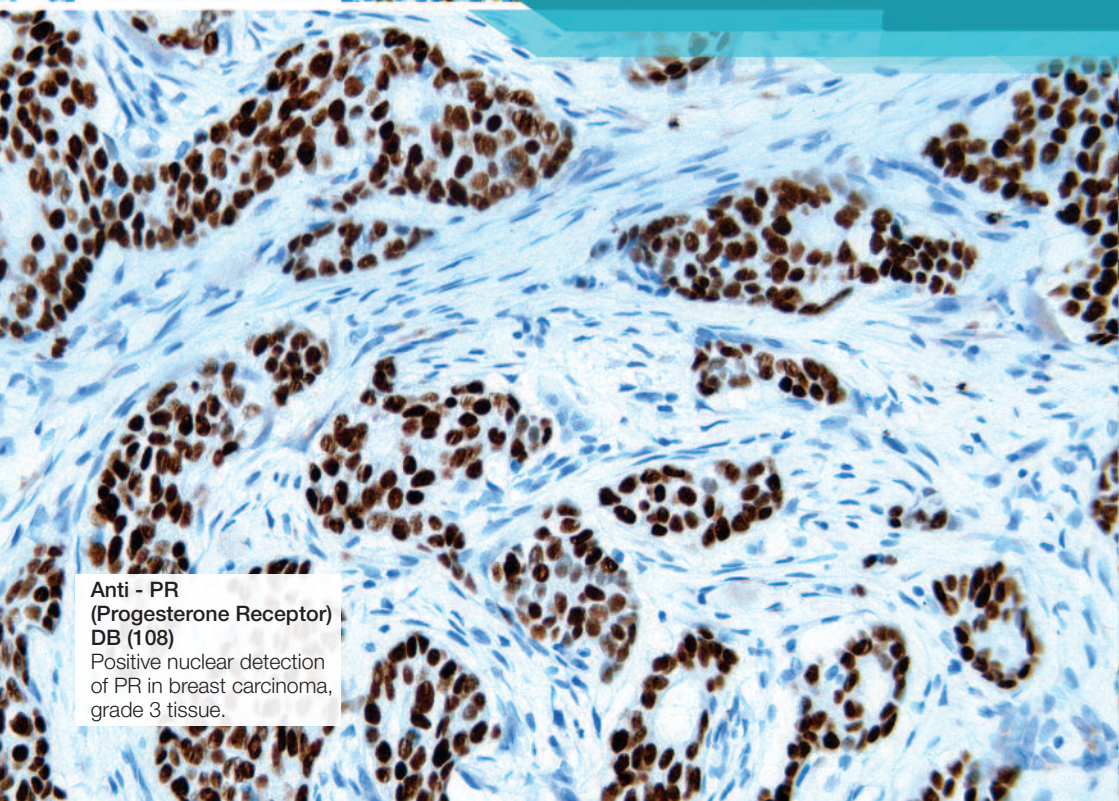


**Anti - EBV/LMP-1  
DB (060)**  
Nuclear staining of LMP1  
protein in lymph node  
of Hodgkin's lymphoma.



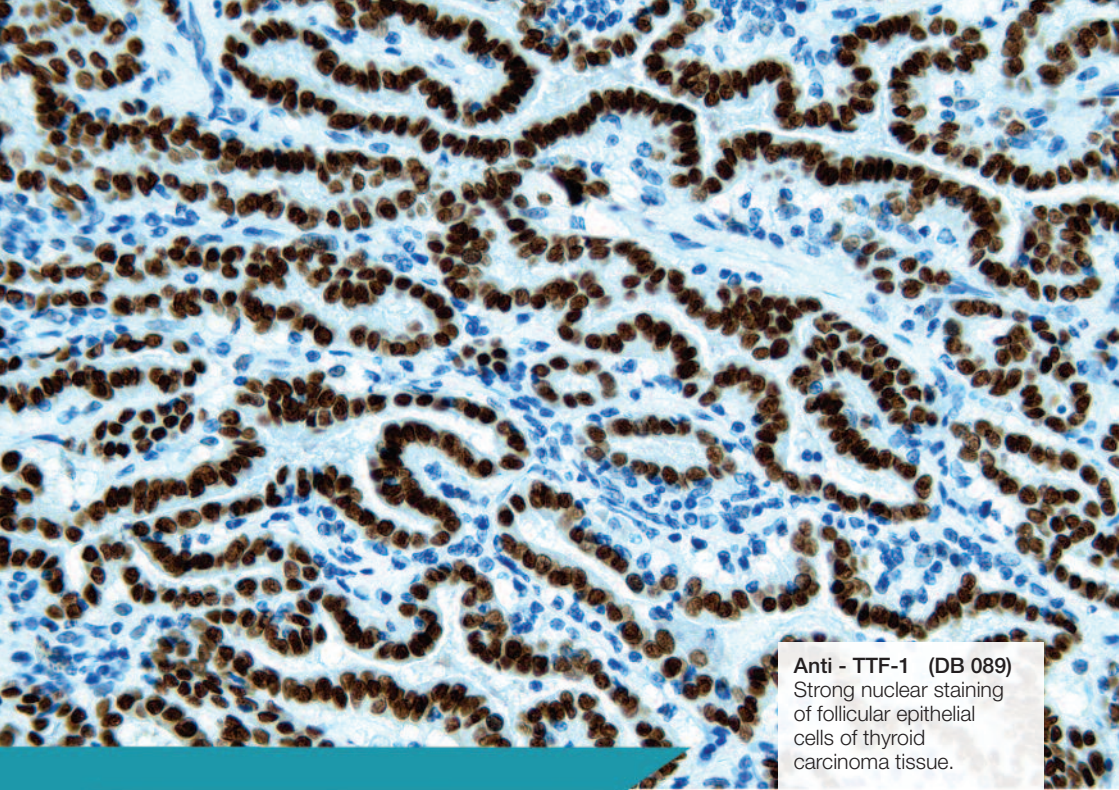
**Anti - CD8 (DB 085)**

Suppressor/cytotoxic T-cells showing a strong and distinct membranous expression of CD8 in tonsil tissue.

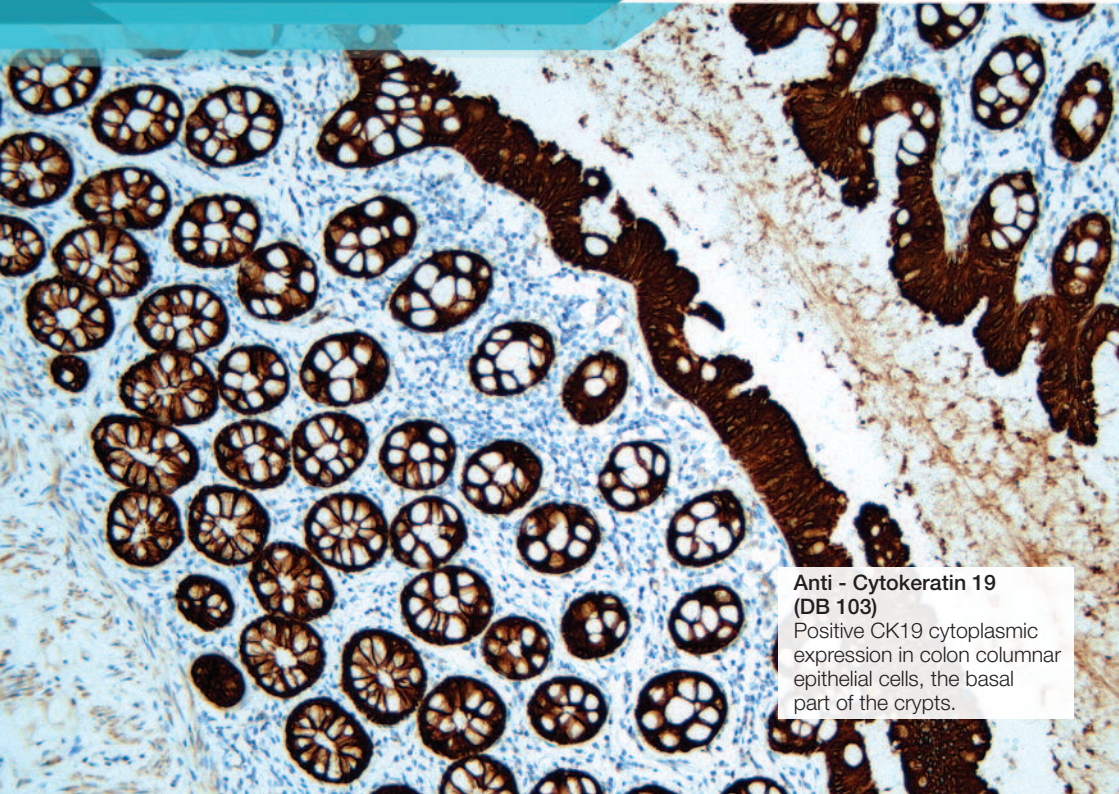


**Anti - PR  
(Progesterone Receptor)  
DB (108)**

Positive nuclear detection of PR in breast carcinoma, grade 3 tissue.



**Anti - TTF-1 (DB 089)**  
Strong nuclear staining  
of follicular epithelial  
cells of thyroid  
carcinoma tissue.



**Anti - Cytokeratin 19  
(DB 103)**  
Positive CK19 cytoplasmic  
expression in colon columnar  
epithelial cells, the basal  
part of the crypts.